

BB TRAVELLER SYSTEMS

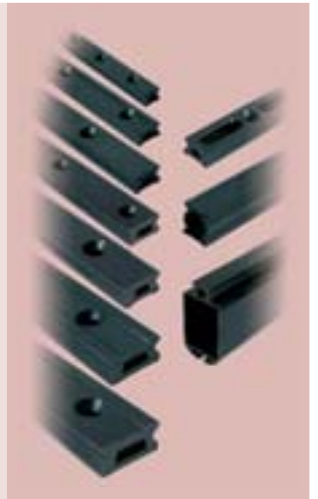
Smooth Control - Frederiksen traveller systems deliver the performance required for optimising sail trim, responding quickly to changing conditions and getting the right balance from the loads on sails, rig and foils. Frederiksen systems have been put to the test by Volvo Race teams, Offshore Multihull and Around Alone challengers, and the professionals on the international Grand Prix circuit who demand the highest performance and dependability, with no room for compromise.

Attention to Detail - Car bodies are machined to precise specifications, then honed to an exceptional finish before being treated and anodised for maximum corrosion protection. Stainless steel elements are put through a special high energy finishing process to achieve a uniquely smooth edge and surface finish.



Tracks

- 7 track sizes are available in the standard product range, to match system specifications to individual requirements.
- Standard low profile tracks have holes for adjustable track stops and cars with plunger stops. Also available in lightweight version with machined slots between fasteners to remove all non-essential material.
- Beam track options are available for unsupported spans (cockpit, companionway hatches). See various series product pages for details and page 107.
- Curved track can be supplied with bend in either horizontal or vertical plane. Minimum bend radius depends on car length. See page 107 for options and details.

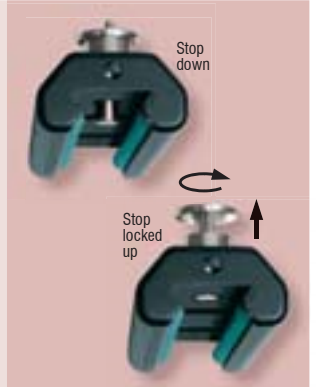


BB Cars

- Machined alloy car bodies with alloy end caps provide high strength and durability with minimum weight.
- Low profile cars ensure that sheets and control lines run close to the deck.
- Highly efficient recirculating Torlon® ball bearing systems allow precision adjustment and control even in the most demanding conditions.



- **SR** Sliderod genoa cars are machined from dedicated Sliderod body profiles for highest possible strength-to-weight ratio. They are used in applications where the sheet lead position does not require adjustment under load. Plunger stops can be locked in the "up" position, and installation and removal from tracks is fast and simple.



Control Accessories

- Cam cleat supports can be adjusted to the optimum cleating angle.
- Low friction ball bearing control sheaves provide purchase systems for mainsheet travellers and genoa sheet lead adjustment.
- Sheave and becket addition kits are available for cars and track control ends to provide extra control line purchase where required.

